

OmniStor/16IS



Intelligent iSCSI RAID Storage Array

OVERVIEW

The *OmniStor/16IS* intelligent iSCSI RAID System, is the latest addition to CUC's SAN storage family with a built-in 64-bit RAID controller for mission critical applications. Utilizing the cost-effective 3Gbps Serial ATA disks, the *OmniStor/16IS* offers Enterprise-grade solution for applications that demand nothing short of superior reliability. Designed to meet the challenge of high impact/high volume network storage requirements, the new *OmniStor/16IS* can be configured in minutes and is becoming the new standard for simplified SAN storage. With hundreds of installations worldwide, CUC has built a solid reputation in both the Broadcast and IT storage markets.

WORLD-CLASS PERFORMANCE

Featuring up to four GbE ports (iSCSI), the *OmniStor/16IS* runs 10x faster than a NAS system and provides versatility critical to a company's IT infrastructure. The *OmniStor/16IS* is powered by a cutting edge 64-bit RAID engine, up to 1GB cache, and 3.0 Gbp/s disks, which maximizes disk performance (110MB/s single channel) allowing for a broader range of storage possibilities. Built-in enterprise feature such as Snapshot, providing point-in-time recovery that safeguard accidental deletion, makes the *OmniStor/16IS* an ideal solution for server storage such as Microsoft Exchange & SQL Server, as well as professional storage applications such as Disk-to-disk backup, database pools, image acquisition, near line storage, data centers, media and asset management libraries and shared SAN networks. Dynamic on-line RAID expansion allows additional capacity to be added without total system downtime, providing increased departmental productivity gains.

HIGH DATA AVAILABILITY

OmniStor/16IS offers a wide range of RAID settings including 0, 1 (0+1), 3, 5, 6, 30, 50 and JBOD. Support for multiple array configurations are included to allow added flexibility ensuring your investment will be in use years down the line. Drive failure detection, automatic drive rebuild, hot spare assignment and background rebuild, make it possible for users to monitor and address system conditions. Dynamic On-line RAID expansion allows additional capacity to be added without total system downtime, adding piece of mind knowing your data is protected at all times.

CONTROLS AND INDICATORS

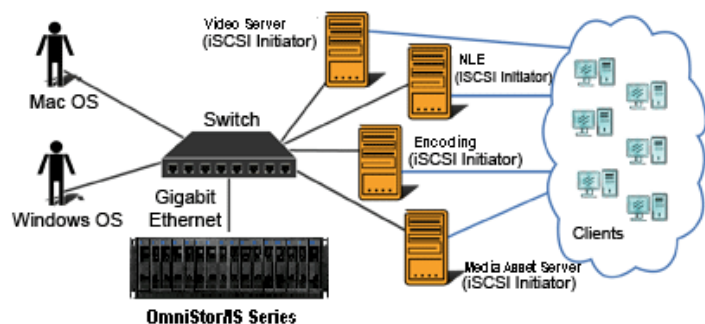
A comprehensive LCD control panel facilitates the setup process and lets users reconfigure the system as their needs change. LED based indicators provide easy visual monitoring and system status at a glance. The *OmniStor/16IS* also provides an audible alarm in the event of a component failure.

FEATURES

- 3U, 16 SATA disks external storage
- Multiple RAID configuration options
- Embedded hardware RAID controller
- 2 GbE full iSCSI offload with load-balancing & fail-over
- One logic volume shared by as many as 16 hosts
- Windows VDS/VSS/MPIO support
- Hot swappable components
- Secure control panel with backlit LCD
- Host access control & CHAP

STORAGE MANAGEMENT

An intuitive menu-driven control system provides easy-to-use installation, configuration and operational information via the onboard LCD panel, from a network connection or serial interface. The web user interface allows disk array management via internet access without any additional client-side software. The *OmniStor/16IS* 'Quick Install' wizard will help get your new RAID storage array installed, configured and on-line within a matter of minutes. All volume configuration and management functions can be administered remotely from the web UI, or from the LCD or serial interface.



OmniStor/16IS



Form Factor

- 3U low profile 19" rack mount
- 16 SATA / Serial ATA disk drive bays

System Architecture

- SATA-to-GbE (10/100 Ethernet support)
- Dual channel (2) GbE ports

Disk Drive Interface

- HDD: SATA/Serial ATA 1.5Gb/s or 3Gb/s
- Form factor: Low profile 1" SATA disks
- RPM: 7200-10,000

Controller Architecture

- Dedicated RAID processor
- Dual PCI bus architecture
- 64-bit 133MHz PCI-X bridge
- 512MB cache (upgradeable to 2G)
- Upgradeable firmware in flash ROM

Controls and Indicators

- Backlit LCD control panel
- Power and drive failure indicators
- Built-in alarm with mute button
- Optional battery backup module

RAID Operation

- RAID level 0 (0+1), 3, 5, 6 and JBOD
- Multiple array support (up to 8 separate arrays)
- Hot-swap drive support
- Hot/global spare drive support
- Online capacity expansion

Management

- User configurable via control panel
- Web browser remote management
- RS232 VT100 ANSI terminal emulation

Enclosure Specification

- **Hot-Swappable** 16 x Removable HDD Tray
- **Drive Failure** 16 x LED Indicator for each HDD
- **System Fan** 3 hot-swappable blowers
- **Status LEDs** 1 x access LED for each HDD
- **Fan-fail LED** 1 x fan-fail LED for system
- **Mute Button** 1 x mute button for fan & temp alarm
- **Power Supply** 1+1 Hot-swap Redundant (2x460Watt)
- **Dimension (H x W x D)** 5.25" x 19" x 19.5"
- **Weight (without disk)** 80 Lbs

Physical & Environment

- **Temperature** - built in thermal & fan sensor
- **Operating Temperature** -10°C ~ 35°C
- **Non-Operating Temperature** -10°C ~ 50°C
- **Operating Humidity** - 20% to 90% non-condensing

Supported Operating System

- Windows 95, 98/98SE, NT, 2000, Millennium, XP, 2003
- Mac 9.1 and above with supported iSCSI initiator card
- Linux (all latest builds) which support iSCSI initiator
- All other systems supporting iSCSI protocol

Power Supply

- Dual redundant removable power modules
- 1+1 hot swappable
- AC input: 90 ~ 264 VAC, 47Hz ~ 63Hz
- Continuous output power: 460W

Cooling

- Three hot swappable fan modules
- DNI BFB0712H brushless blowers
- 12V DC, 0.36A, 3-pin connector

Standard Warranty

- **System Warranty** - 3 years
- **Advanced Replacement** - 90 Days

